

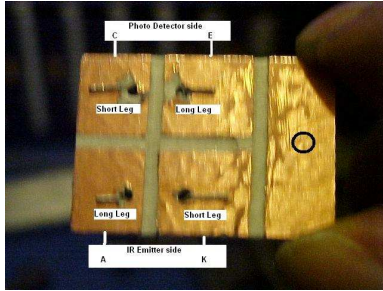
# Two Optical Switches off one PCB

Used for the Index signal for Threading, Spindle RPM, X Y Z Home Switches Or Limit Switches.

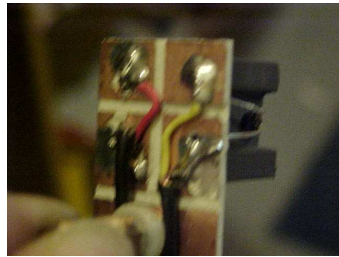
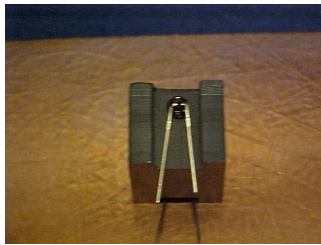
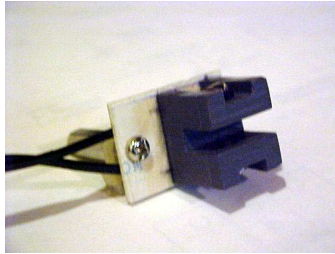
Bend over the legs and attach wires for soldering.

IR Emitter and Photo Detector > Note Long and Short Legs.

PCB for Remote Switch

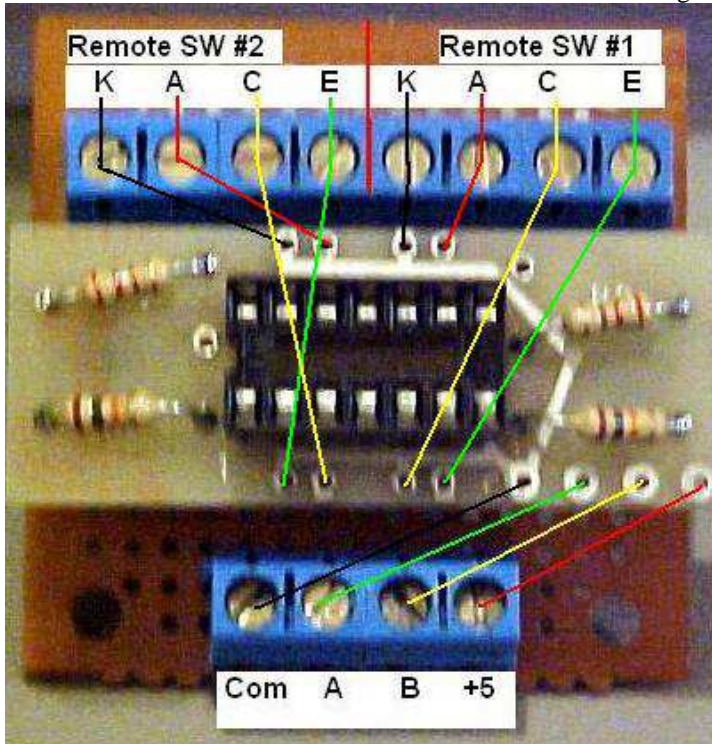


Block mounted on PCB

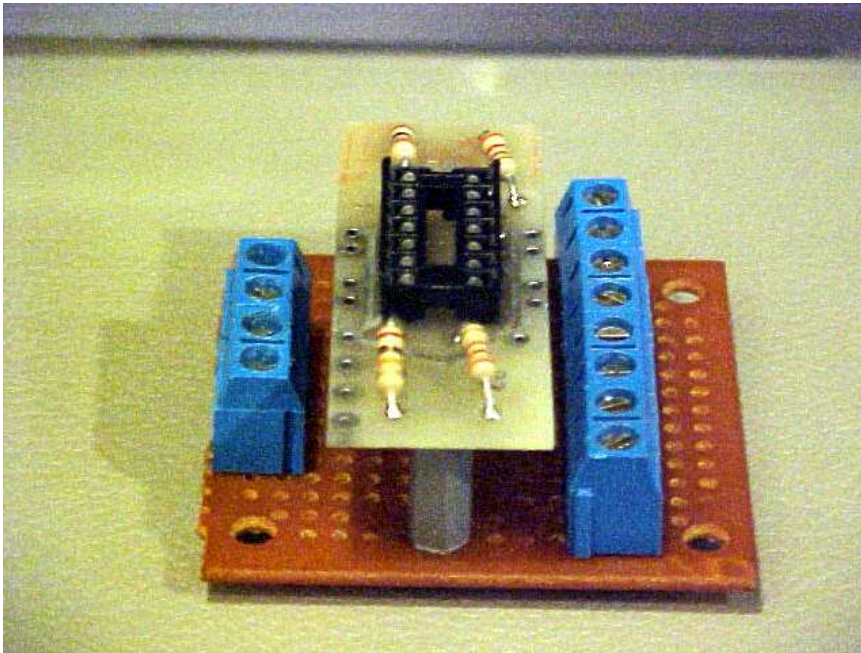


PCB Mounted on Radio Shack Board

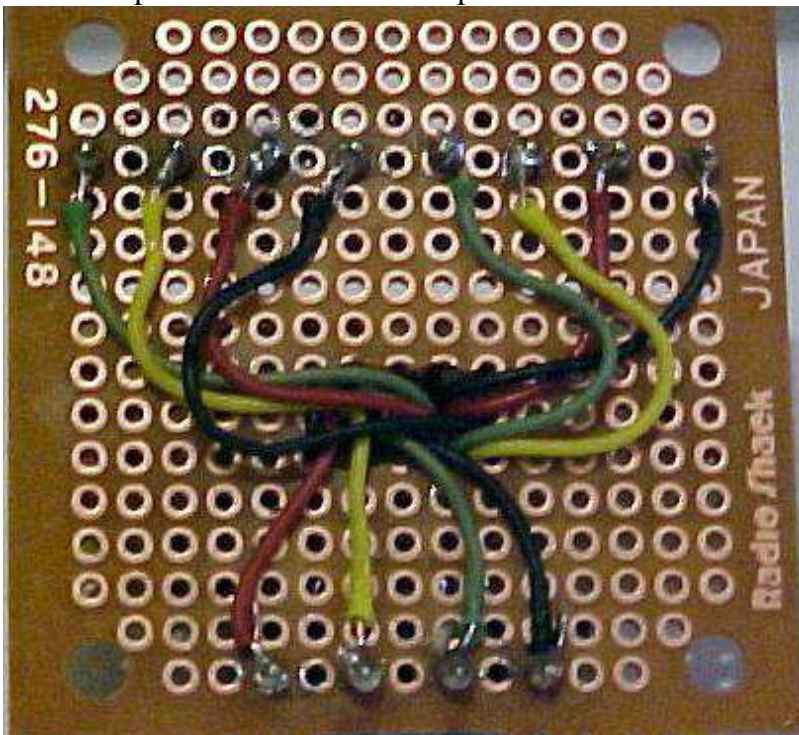
Color Code for wiring



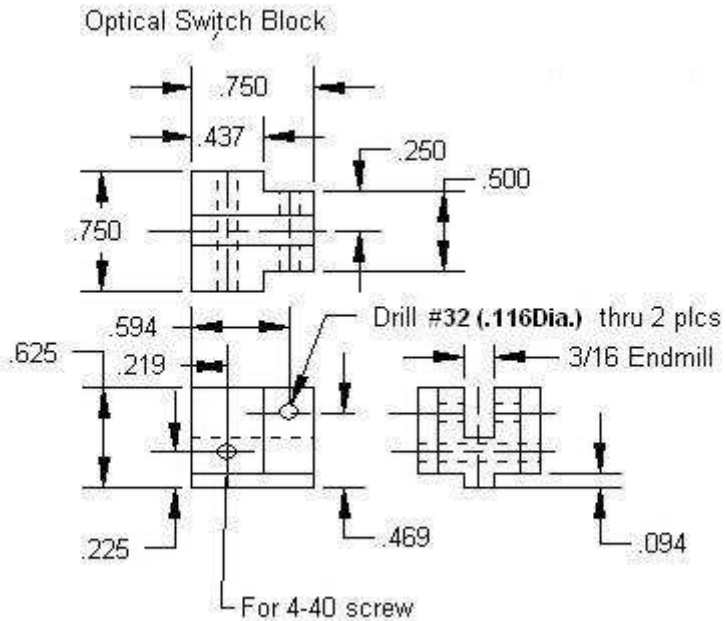
Side View



Wires thru Drilled Hole in Board.  
I used telephone wire for the hookup.



## Plastic block to hold Photo Detector and IR Emitter Detail



## Electronic Parts List

### Resistors

P1, P2 = 220Ohm ¼ w (2) required

R1, R2 = 2.7K¼ w (2) required

Infrared Emitter Digi-Key #160-1028-ND (2) required

Photo Detector Digi-Key # 160-1030-ND (2) required

14pin socket (1) required

74HC14N-14pin Hex Schmitt trigger (1) required

Small PCB used for the Optical switch inquirer at:

<mailto:stcnc@lycos.com>

More CNC Projects at:

<http://www.cad2gcode.com/cncprojects>