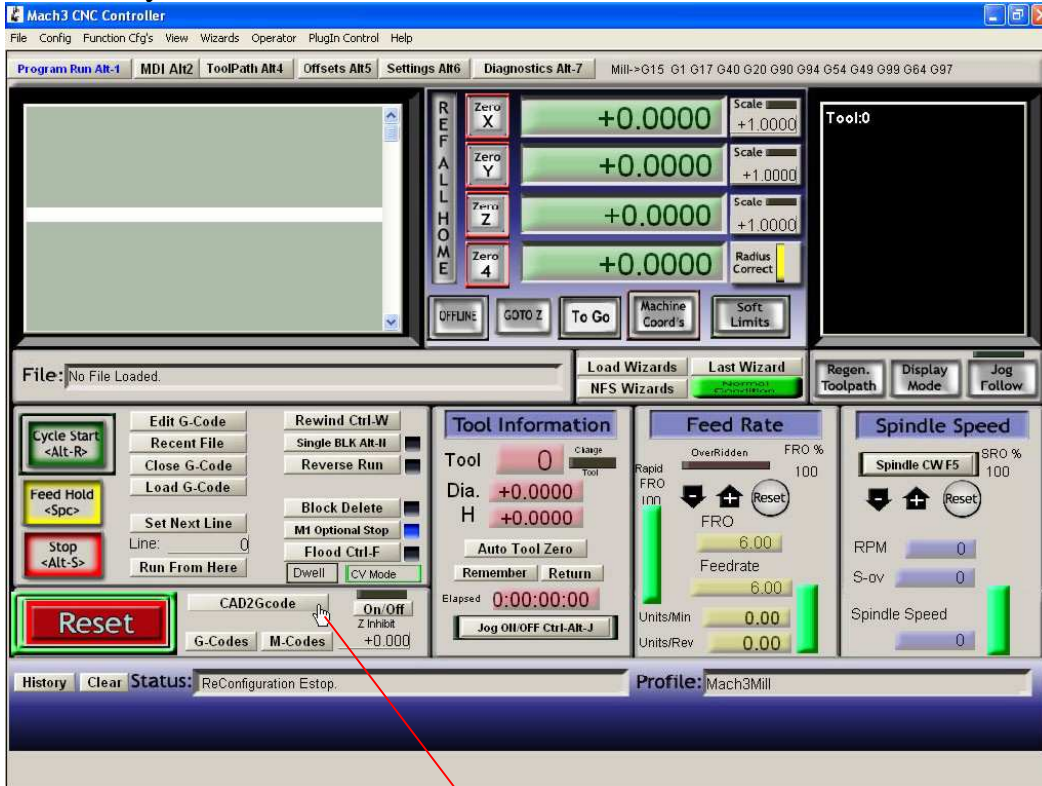


Adding your Program to Mach3 Screen

My program is CAD2Gcode for Engraving.
This is my Screen with added Button.



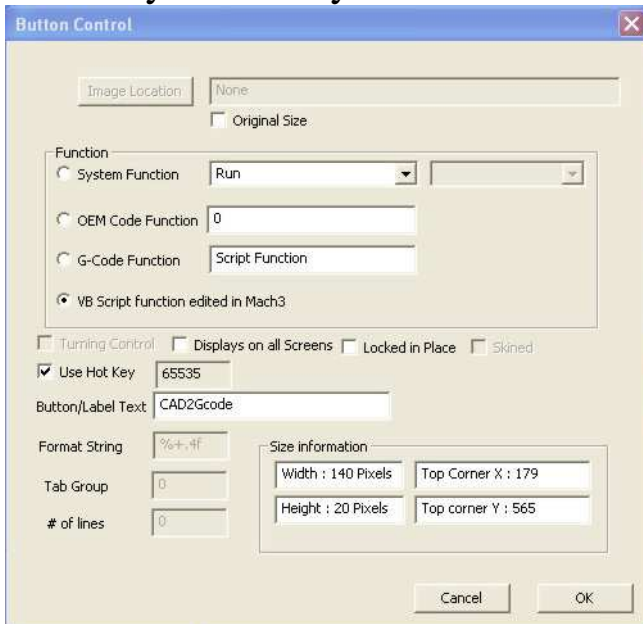
Add a Button here using Mach3 Screen4.exe
The Screen4.exe is in the Mach3 Folder on C:\drive.



Then click on the Button to enter Data shown



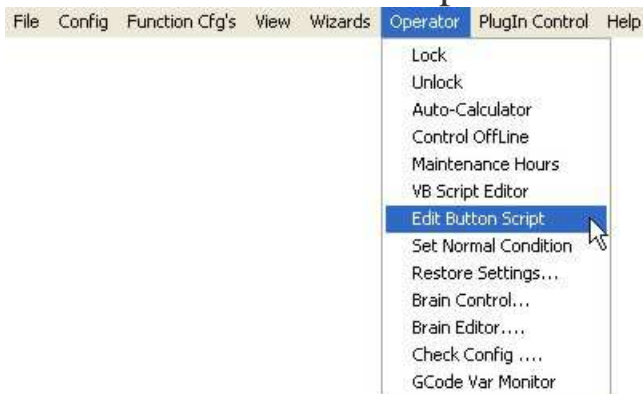
Save as your 1024 your name.set



NEXT

From Mach3 top menu click on Operator.

Click on Edit Button Script.



Button will start flashing click on the Button.



Enter data shown below.

Change path in Red to your program.

Save as HiddenScript.m1s

A screenshot of a 'HiddenScript.m1s - Mach3 VB Script Editor' window. The window has a menu bar with 'File', 'Edit', 'Run', 'Debug', and 'BreakPoints'. Below the menu is a toolbar with icons for file operations and execution. The main text area contains the following VB script:

```
Private Sub Form_Load()  
Dim dTaskID As Double, path As String, file As String  
path = "C:\engrave\cad2engrave.exe"  
fileToLoad = Filename  
dTaskID = Shell(path + " " + fileToLoad, vbNormalFocus)  
  
End  
End Sub
```

The path string is highlighted in red. The status bar at the bottom shows 'Ready', 'Ln 1, Col 1', and 'NUM'.

That's It!