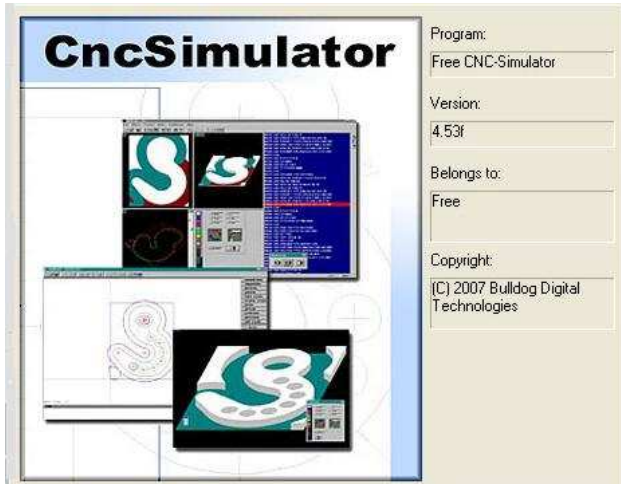
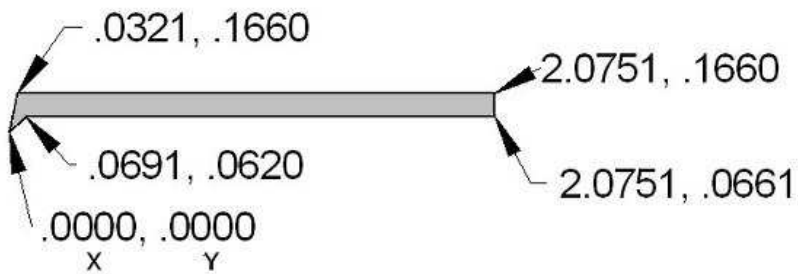


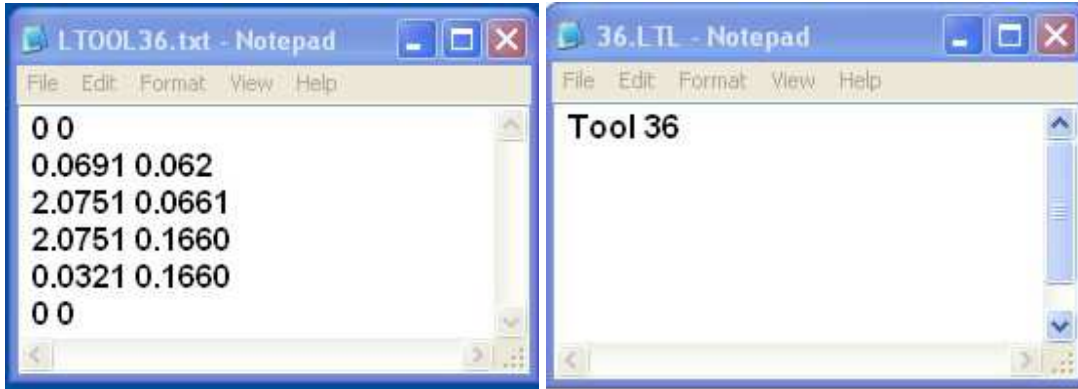
Drawing a Lathe Tool for CncSimulator



Using your CAD program to draw the tool.
For a Boring tool draw in the Positive direction.
For a Turning tool draw in the Negative direction.
Start at 0,0 the point of the tool, moving in the Counterclockwise direction.
Make a note for each X, Y coordinate.



The Drawing above shows the X, Y coordinates.
Open Windows Notepad
Type the X Y coordinates as shown.
Save as LTOOL.36.txt
Open Notepad again and Save as 36.LTL.txt
Type Tool 36



The two files are copied and pasted into the C:\Program files\CncSimulator\t tools inch folder.



Then delete from both files the (.txt).
That's it!